

# PROVIDER PARTNERS



## OUR MISSION

*To be the best healthcare option for individuals and families, by providing quality healthcare benefits at affordable rates.*

## OUR VISION

*To bring transparency, affordability, and compassion to healthcare.*

## OUR VALUES

*We believe in Transparency  
We believe in Advocacy  
We believe in Affordability  
We believe in Compassion  
We believe in Innovation*

## We make it easy to join!

Complete our online application at  
[www.ovation.health/join-our-network](http://www.ovation.health/join-our-network)



For questions, call 1-866-549-4199.

## Ovation Health

22001 Northpark Drive, Suite 200  
Kingwood, TX 77339

1-866-549-4199  
[www.ovation.health](http://www.ovation.health)



## Join our Direct Provider Network



### ► Get Paid FAST

As a contracted provider, you can get paid monthly. Ask us how!

### ► Gain More Patients

We always refer our members to contracted providers first.

### ► Receive Helpful Support

Person-to-person service with quick processing of authorizations and claims.

Through smart design, technology, and education, we are improving the interaction between providers and patients. We make it easy by providing amazing support, quick payments and robust medical coverage.

**Join with us today and help build  
a better future for healthcare!**

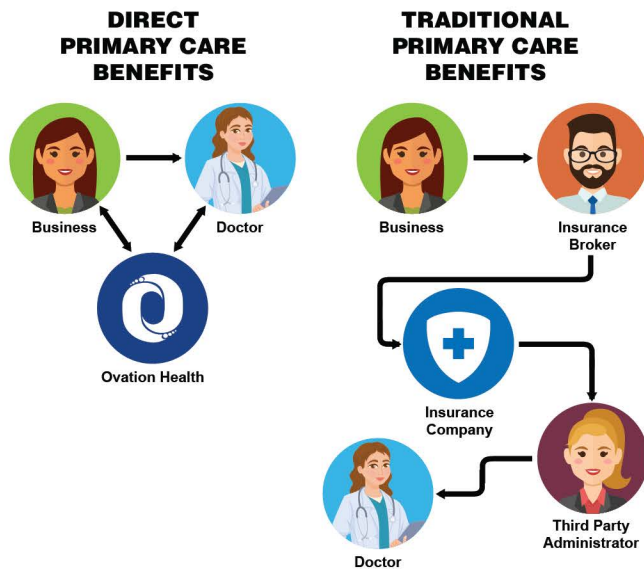
1-866-549-4199  
[www.ovation.health](http://www.ovation.health)

# WHO WE ARE

Founded by physicians, our health plans were designed to provide top quality health care at affordable rates.

Through innovative structuring, we lower costs by combining telemedicine, a robust pharmacy program, and a growing network of physicians. We do this by fixed rate direct contracting and expanding relationships with additional provider networks.

## Why It Works



Because Ovation is so closely partnered with the TPA and we have agents that work with us, we are able to consolidate these elements. Consolidating improves efficiency, speed of payment, and transparency.

# WHAT WE OFFER

Our aim is to make the health care process easier for our members and providers.

We do that through tailored care options that ensure our members get the right care from the right provider, at the right time.

## Our Members Receive

- ▶ **An Open Network**, enabling members to add their existing or preferred local providers.
- ▶ **A National Telemedicine Network**, enabling members to access medical care quickly in both urban and rural areas from the safety and comfort of their home.
- ▶ **No Copays for Primary Care, Labs and Imaging**, for all group plan members.
- ▶ **A Care Team**, that provides our members with personal health care coordination and patient advocacy to assist with negotiating and mitigating costs.
- ▶ **A Robust Pharmacy Program**, providing our members with at-cost pharmacy drugs and medications.
- ▶ **Customized Plan Options**, enabling our members to choose from a wide range of provider partners with specialized health benefits.

# OUR PLANS

All group plans include discount dental, vision and hearing benefits, plus a variety of provider options and add-on benefits to customize health plans. Plus, our self-insured and underwritten level-funded plans are re-insured to mitigate catastrophic events.

## Group Plans Summary

GOLD PLAN	PLATINUM PLAN
<b>Coinsurance</b>	<b>Coinsurance</b>
80% Plan; 20% Member	None
<b>Out-of-Pocket Limit</b>	<b>Out-of-Pocket Limit</b>
Individual \$7,900 Per Family \$15,500	Individual \$6,350 Per Family \$12,500
<b>Deductible</b>	<b>Deductible</b>
Individual \$2,500 Per Family \$5,000	Individual \$0 Per Family \$0
<b>Lifetime Maximum</b>	<b>Lifetime Maximum</b>
Unlimited	Unlimited
<b>Well Person Annual Exams</b>	<b>Well Person Annual Exams</b>
Unlimited	Unlimited
Contracted Primary Care - \$0 Primary Care Visits - \$25 Specialist Visits - \$25	Contracted Primary Care - \$0 Primary Care Visits - \$25 Specialist Visits - \$25
<b>Diagnostic Imaging</b>	<b>Diagnostic Imaging</b>
Contracted Imaging Facility - \$0 Other - \$250	Contracted Imaging Facility - \$0 Other - \$250
<b>Diagnostic Labs</b>	<b>Diagnostic Labs</b>
Contracted Imaging Facility - \$0 Other - \$50	Contracted Imaging Facility - \$0 Other - \$50
<b>Emergency &amp; Urgent Medical Care</b>	<b>Emergency &amp; Urgent Medical Care</b>
ER/Hospitalization - \$500/day Surgical Centers - \$400/day Urgent Care Clinic - \$75	ER/Hospitalization - \$500/day Surgical Centers - \$400/day Urgent Care Clinic - \$75

Ask about our Individual Health Plans and how you can earn money monthly being the Primary Care Physician for members who sign up with you for 6 visits per year.