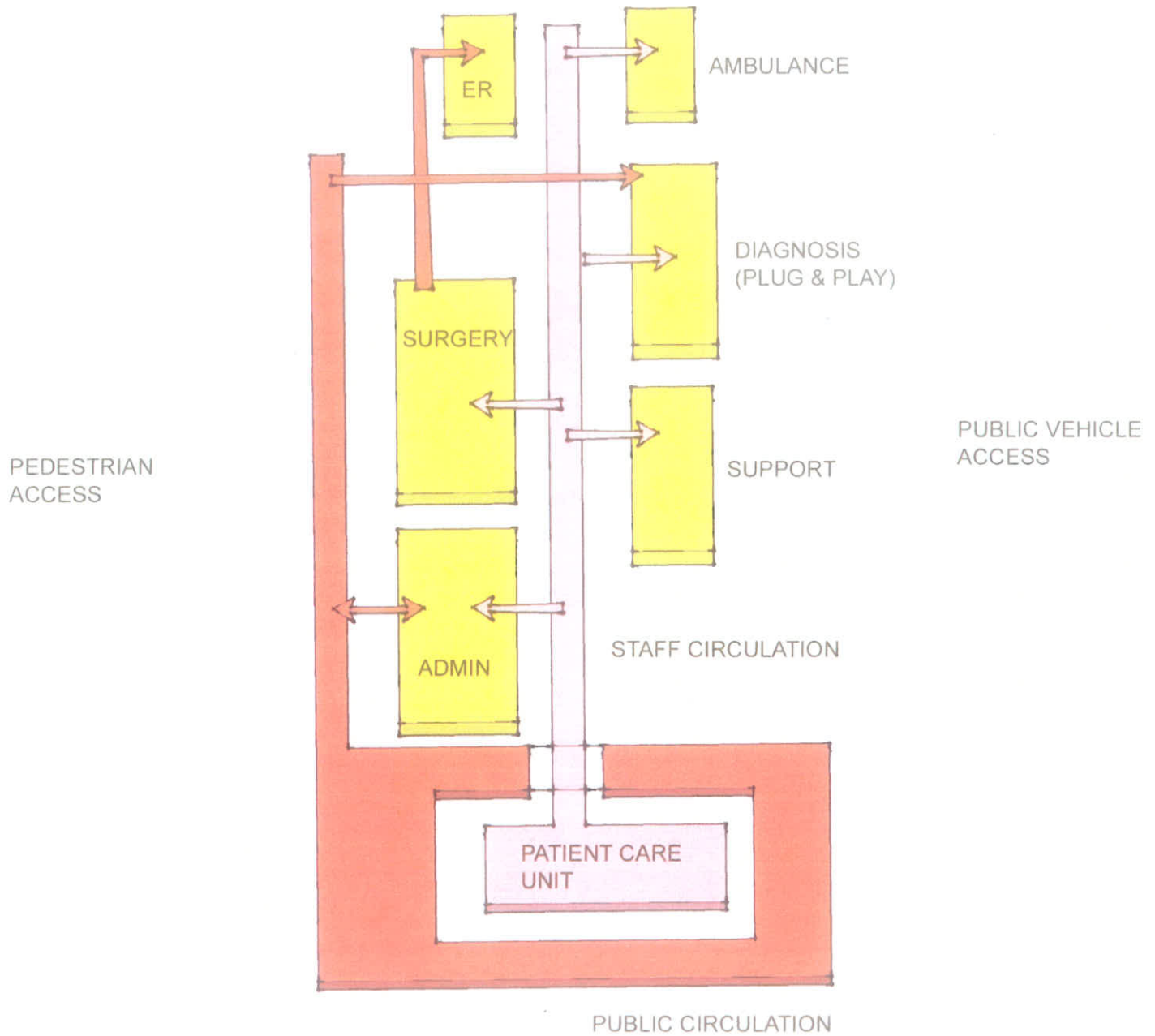


Hospital Designs



THE HEALING GARDEN CONCEPT

- TOTAL ISOLATION OF PUBLIC AND PRIVATE PATHS
- MAXIMUM HVAC CONTROL - FRESH AIR
- MINIMIZE STAFF PATH
- MAXIMIZE PUBLIC ACCESS CONTROL FOR LIMITED EXPOSURE



N

Public Outer Hallway -
for visitors only, this hallway is
separated from Patient Rooms
and Staff Hallway. Keeps
the public from interfacing
with carts, liners, personnel, and
other potentially contaminated
surfaces and air. This protects
both the visitors and the patients
they visit.

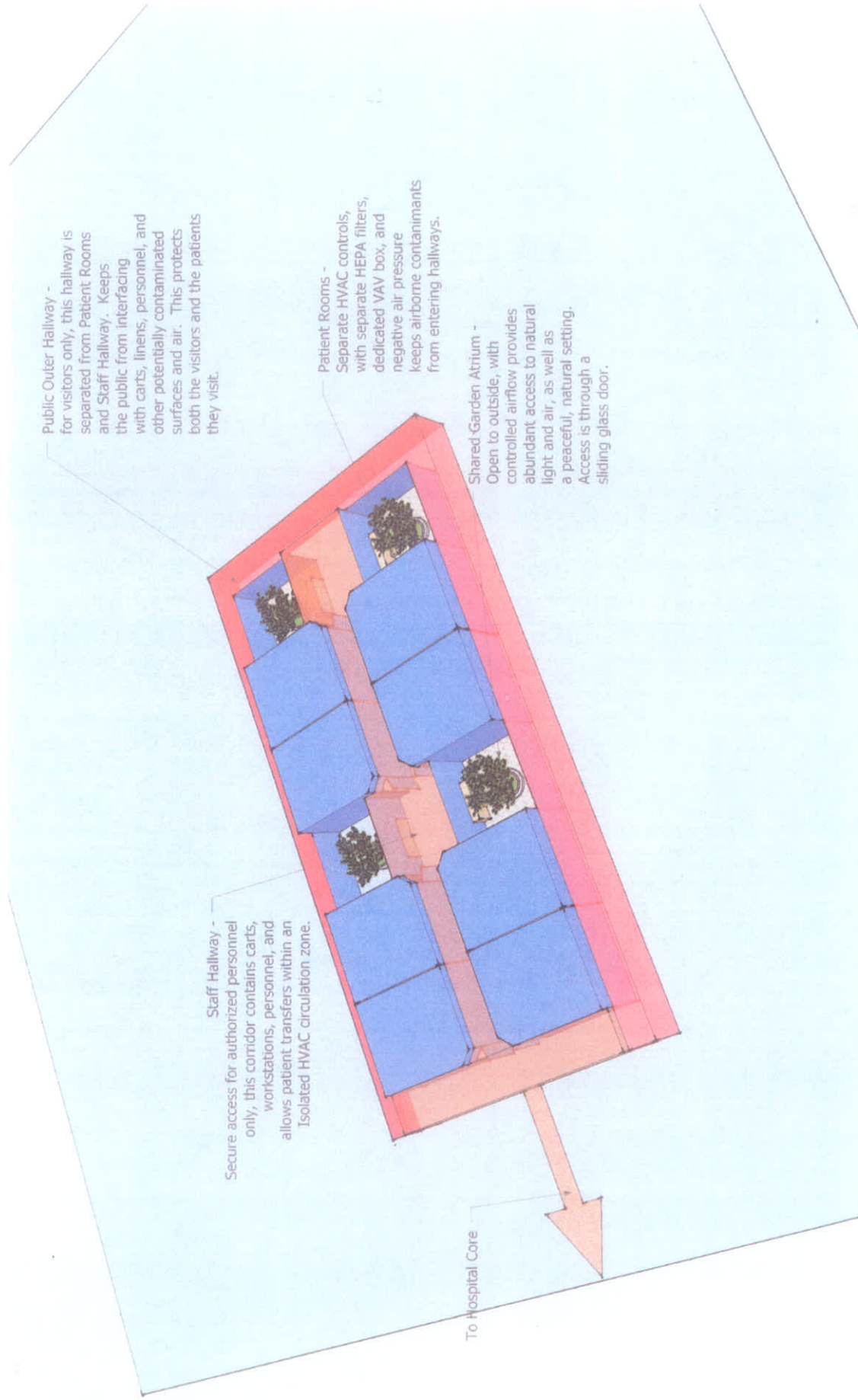
Patient Rooms -
Separate HVAC controls,
with separate HEPA filters,
dedicated VAV box, and
negative air pressure
keeps airborne contaminants
from entering hallways.

Shared Garden Atrium -
Open to outside, with
controlled airflow provides
abundant access to natural
light and air, as well as
a peaceful, natural setting.
Access is through a
sliding glass door.

Staff Hallway -
Secure access for authorized personnel
only, this corridor contains carts,
workstations, personnel, and
allows patient transfers within an
Isolated HVAC circulation zone.

To Hospital Core

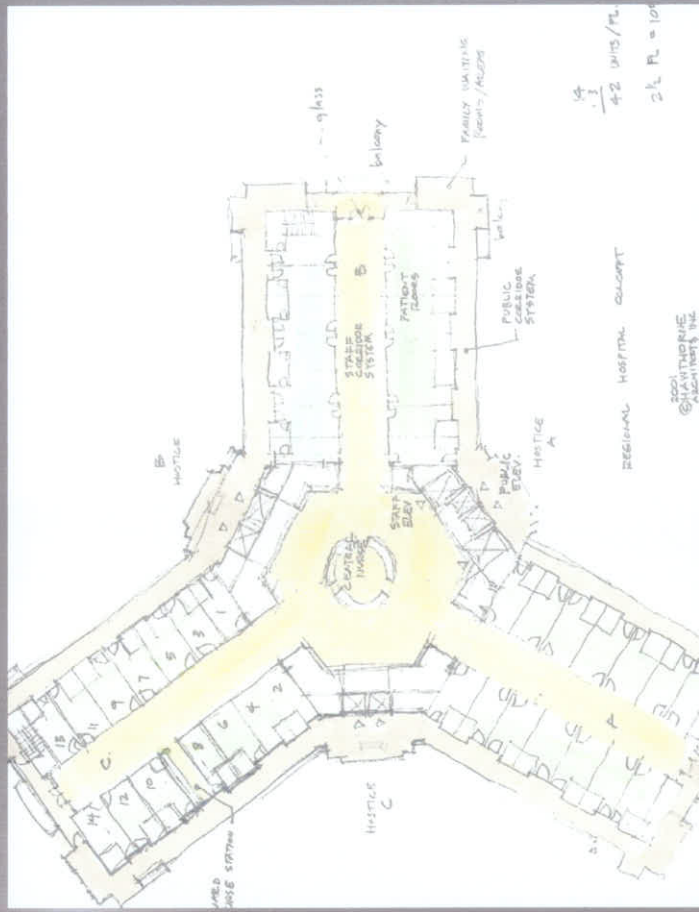
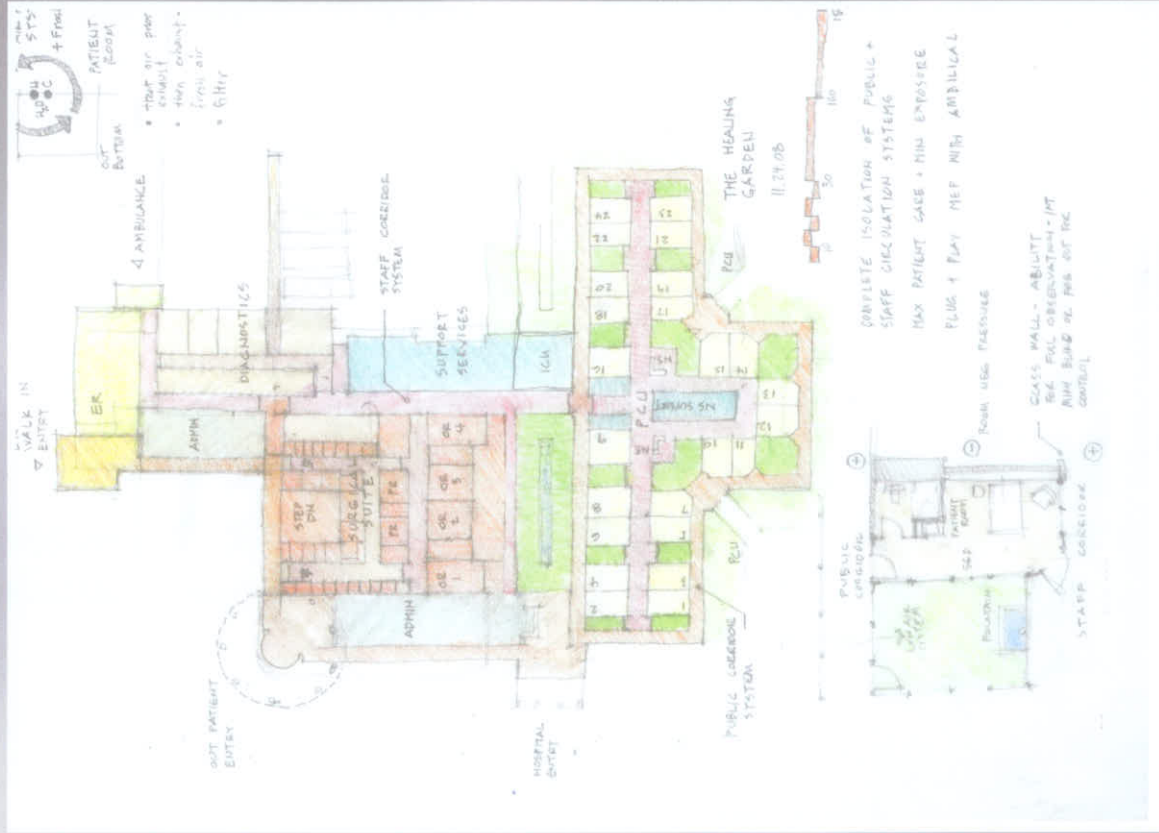
N



How do we build better Facilities?

The answer is to design a facility that breaks the pathogen chain in the transmission of air, droplet and contact transmission.

- 1) Develop a dual corridor system that isolated the public and staff circulation systems, thus minimizing all forms of contact exposure.
- 2) Modify the mechanical systems to establish negative pressure systems in the Patient Rooms, post treat the exhaust air, and provide isolated systems.



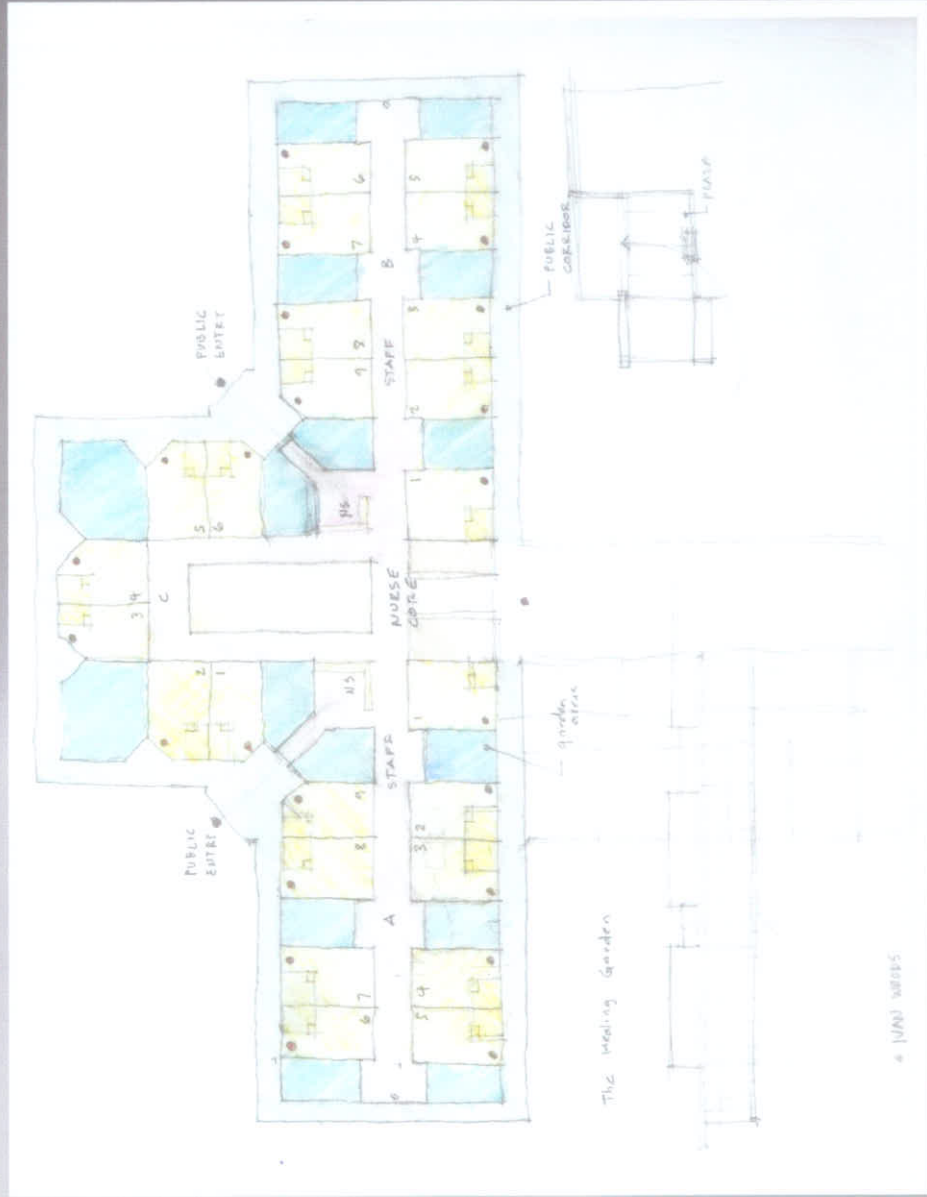
© 2001 THE UNIVERSITY OF MICHIGAN

14
-1
42 UNITS/FL
2 1/2 FL = 10'

The Solution Around NFPA

Define a third glass surface by creating a common garden area between every other room.

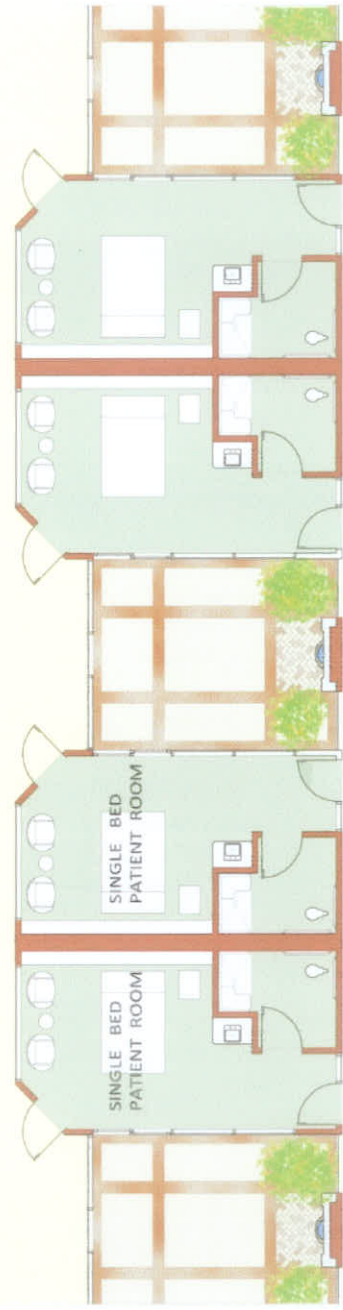
In this manner, we can achieve total separation between Public and Staff while gaining the added health benefits of a garden area.



PUBLIC CORRIDOR SYSTEM
Positive Pressure



STAFF CORRIDOR SYSTEM
Positive Pressure

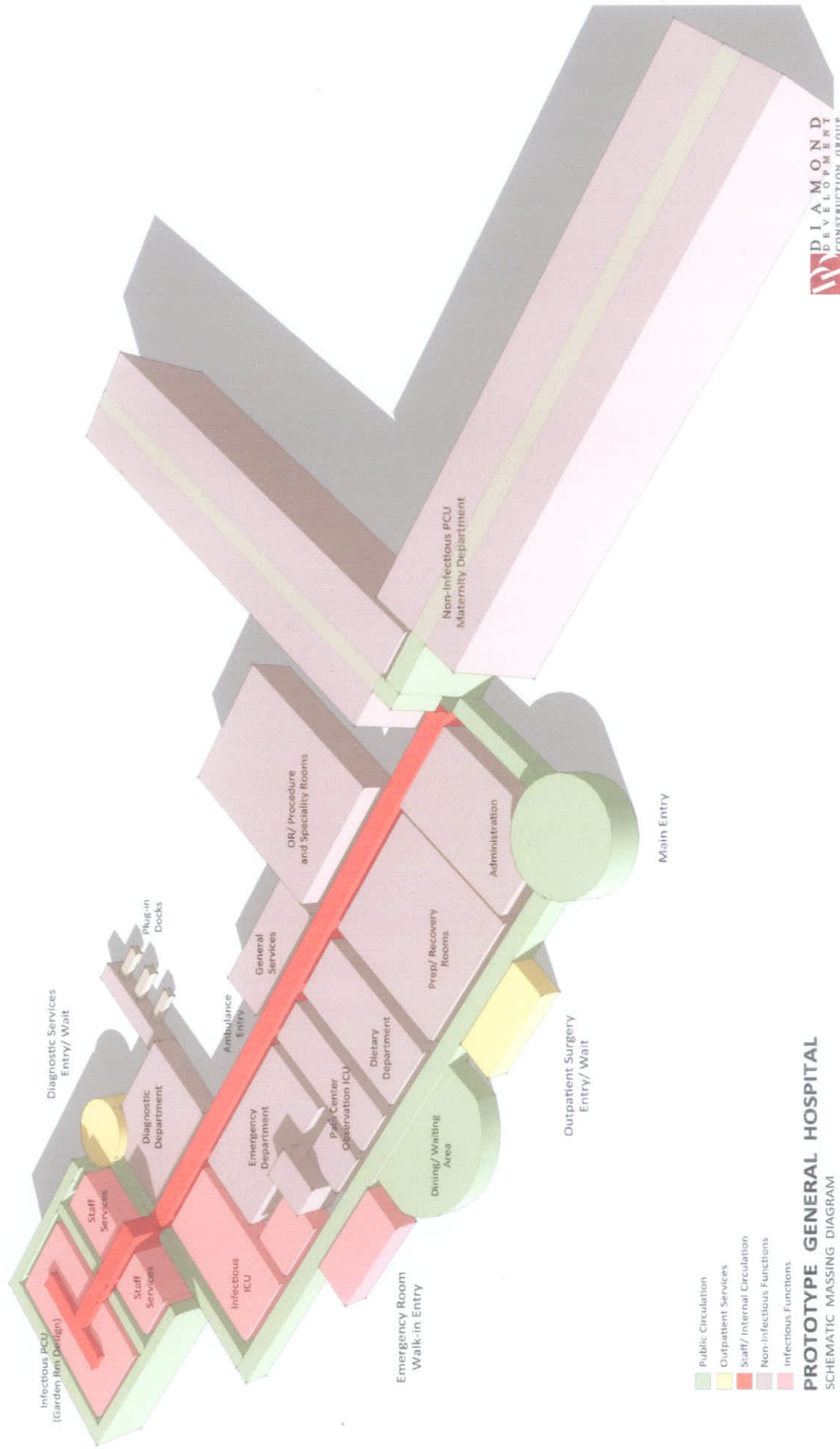


PUBLIC CORRIDOR SYSTEM
Positive Pressure

Dual Corridor Patient Care Unit

Total Separation Between the General Public
and the Healthcare Staff & Equipment





HAWTHORNE
ARCHITECTS, INC.

N

HAWTHORNE
ARCHITECTS

2714 46th Street
Dickinson • Texas
7 7 5 3 9
281 • 337 • 4270



PEARLAND
REGIONAL HOSPITAL

PEARLAND
SURGICAL HOSPITAL

HAWTHORNE
ARCHITECTS, INC.

2715 KEEB STREET
DALLAS, TEXAS 75244
972.412.4472



N