

Clinic Designs

THE INVISIBLE HEALTH CARE CRISIS

An Accountable Care Solution

A better choice for community health care

Diamond Development Group

- ▣ Office & Retail Buildings
- ▣ Banks & Financial Institutions
- ▣ Residential & Retirement Communities
- ▣ Medical Facilities
- Industrial, Manufacturing & Marine
- Municipal, Religious & Educational
- Hospitality, Condominium & Multifamily
- Resort Development



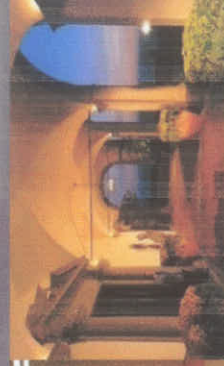
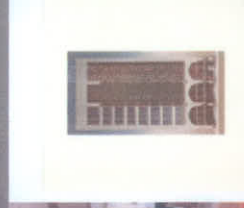
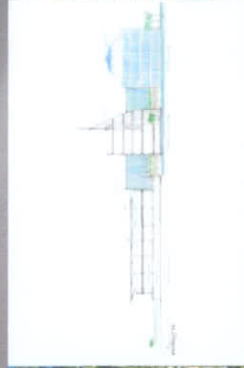
Diamond Development Group (con't)

- ▣ Office & Retail Buildings
- ▣ Banks & Financial Institutions
- ▣ Residential & Retirement Communities
- ▣ Medical Facilities
- Industrial, Manufacturing & Marine
- Municipal, Religious & Educational
- Hospitality, Condominium & Multifamily
- Resort Development



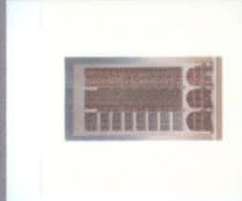
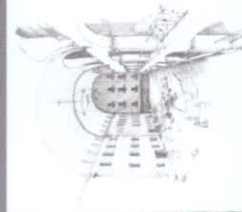
Diamond Development Group (con't)

- ☐ Office & Retail Buildings
- ☐ Banks & Financial Institutions
- ☐ Residential & Retirement Communities
- ☐ Medical Facilities
- Industrial, Manufacturing & Marine
- Municipal, Religious & Educational
- Hospitality, Condominium & Multifamily
- Resort Development



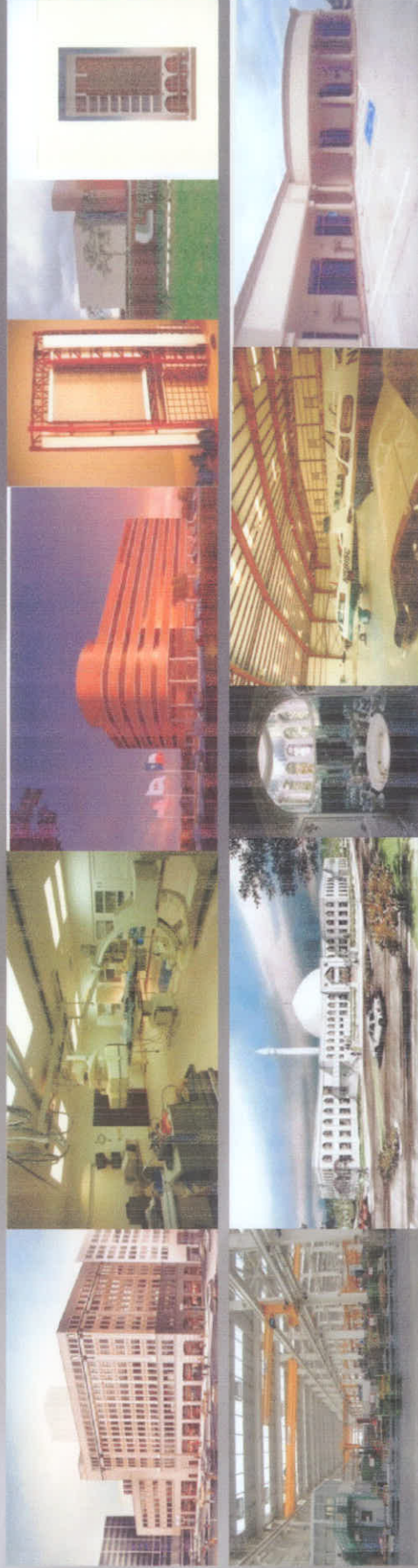
Diamond Development Group (con't)

- ☐ Office & Retail Buildings
- ☐ Banks & Financial Institutions
- ☐ Residential & Retirement Communities
- ☐ Medical Facilities
- Industrial, Manufacturing & Marine
- Municipal, Religious & Educational
- Hospitality, Condominium & Multifamily
- Resort Development



Diamond Development Group (con't)

- ▣ Office & Retail Buildings
- ▣ Banks & Financial Institutions
- ▣ Residential & Retirement Communities
- ▣ Medical Facilities
- Industrial, Manufacturing & Marine
- Municipal, Religious & Educational
- Hospitality, Condominium & Multifamily
- Resort Development



LIFE CYCLE of a PATHOGEN

Need a Caustive Agent, a Pathogen must be present (bacteria, fungi, virus, ect.)



Need a Reservoir, some place where the pathogen can live and grow.

Need an Exit Portal (nose, mouth, eyes, mucous membranes, open wound, instrument)

Need a mode of transmission:

Airborn

3 Droplet (sneezing, coughing, talking, mouth & throat procedures)

Direct Contact

Indirect Contact

Vectors

Need an Entry Portal (nose, mouth, eyes, mucous membranes, open wound, instrument)

Need a New Reservoir

LIFE CYCLE of a PATHOGEN

Need a Caustive Agent, a Pathogen must be present (bacteria, fungi, virus, ect.)

1 Need a Reservoir, some place where the pathogen can live and grow.

2 Need an Exit Portal (nose, mouth, eyes, mucous membranes, open wound, instrument)

Need a mode of transmission:

Airborn

3 Droplet: (sneezing, coughing, talking, mouth & throat procedures)

Direct Contact

Indirect Contact

Vectors

4 Need an Entry Portal (nose, mouth, eyes, mucous membranes, open wound, instrument)

5 Need a New Reservoir

